



Social and Economic Opportunities in the Sacramento-San Joaquin Delta

November 17, 2016

Alejo Kraus-Polk

UCDAVIS

UCDAVIS
CENTER FOR REGIONAL CHANGE

PLACE PEOPLE GEOGRAPHY

Place as Process

Place as Relationship

Regional Opportunity Index (ROI) and the Delta

The goal of the ROI is to help target resources and policies toward people and places with the greatest need, to foster thriving communities of opportunity for all Californians.

It does this by incorporating both a "**people**" component and a "**place**" component, integrating economic, infrastructure, environmental, and social indicators in to a comprehensive assessment of the factors driving opportunity.

Online mapping tool:

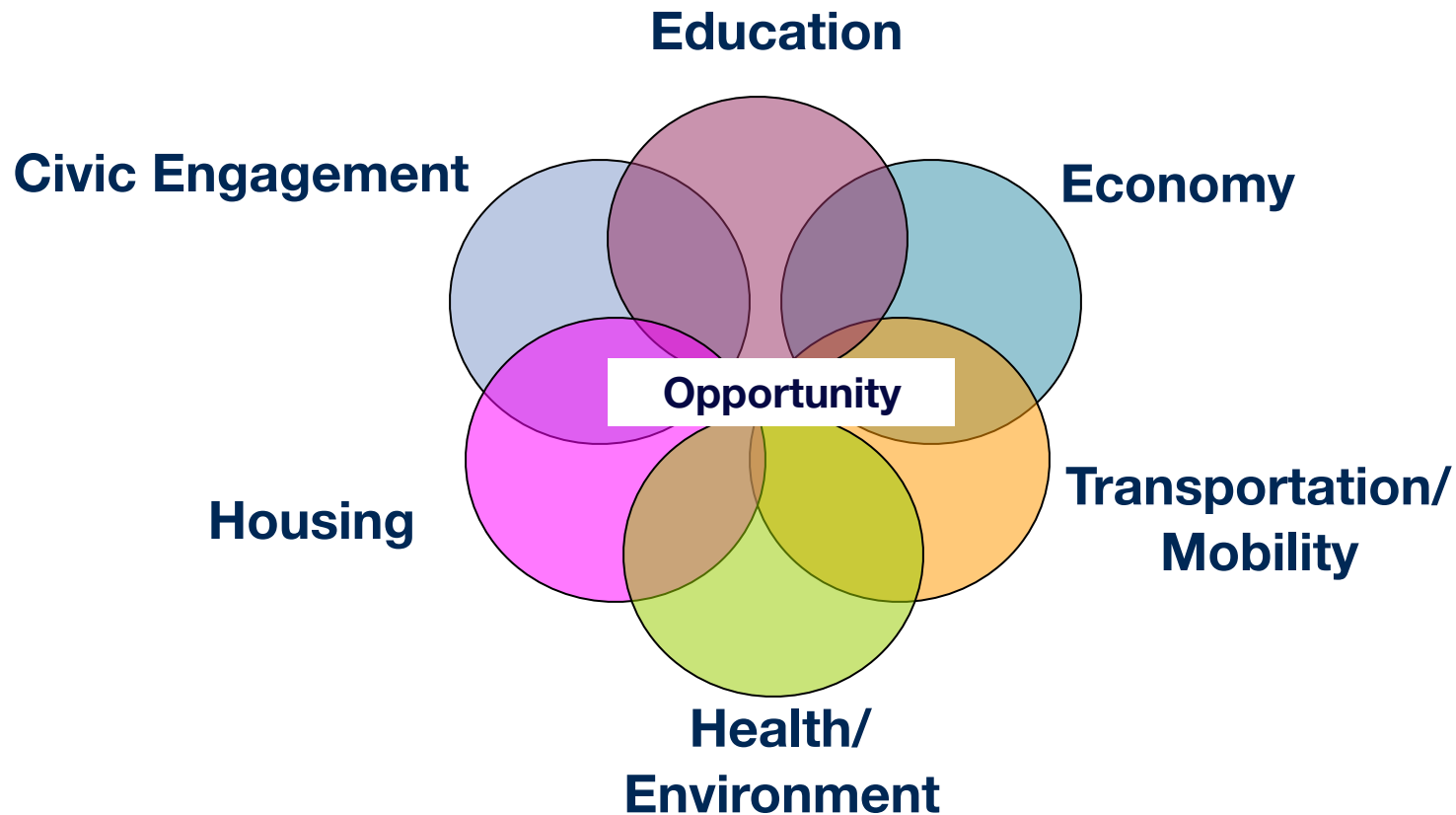
<http://interact.regionalchange.ucdavis.edu/roi/webmap/webmap.html>

Opportunity

In places of high opportunity, residents have the *material* and *cultural* resources they need to live a healthy, meaningful, and successful life.



Comprehensive Vision of Regional Opportunity



ROI Indicators

People

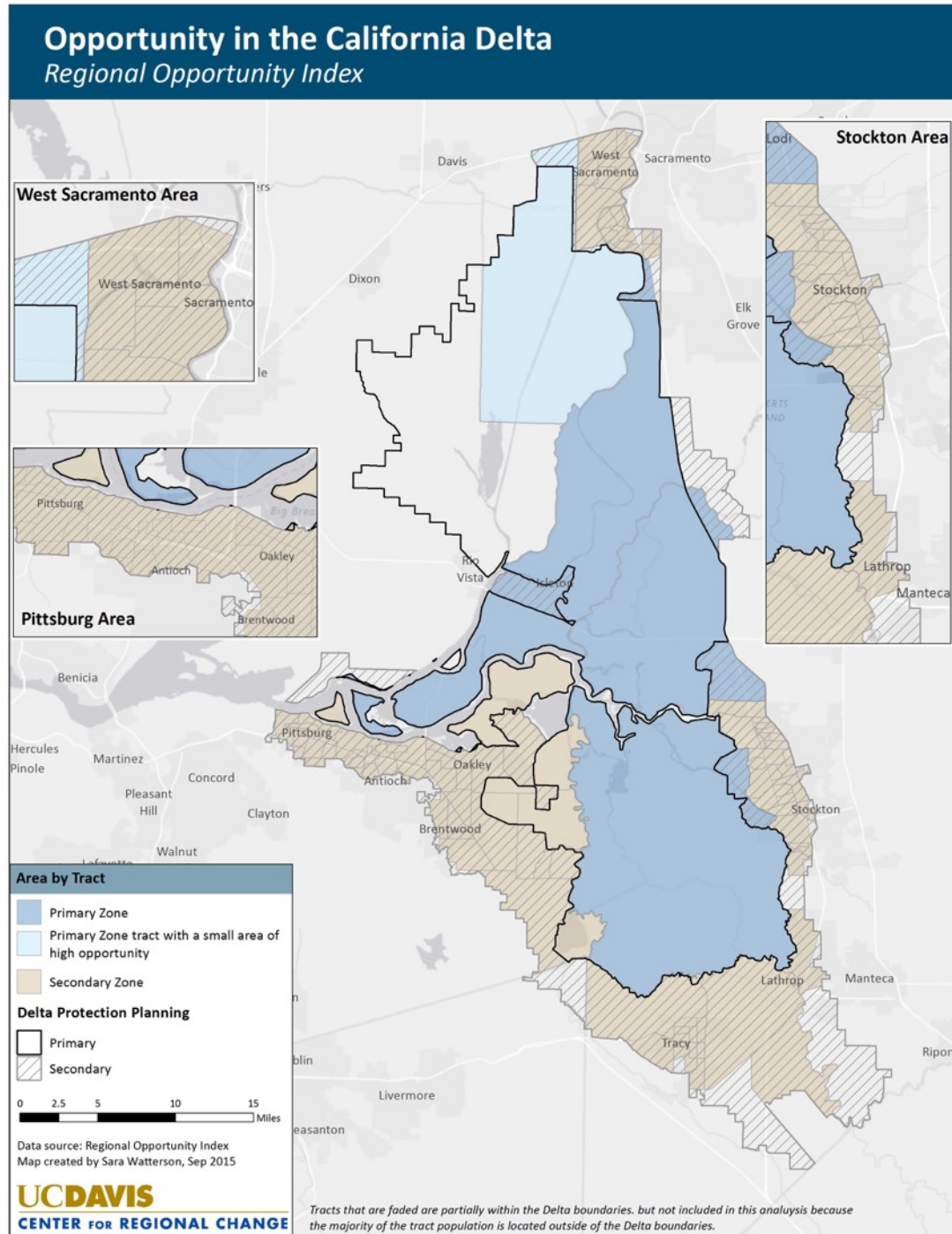
- **Education**
 - % of adults with post-secondary education
 - % 4th graders proficient in ELA
 - % 4th graders proficient in math
 - Elementary school truancy rate
- **Economy**
 - % of adult population employed
 - % of households above 200% FPL
- **Housing**
 - % of households who own home
 - % of households paying <30% of income on housing
- **Mobility/Transportation**
 - % who commute 30 min. or less
 - % households with at least 1 vehicle for worker
 - Households with broadband
- **Health/Environment**
 - % healthy weight babies
 - % births to teens
 - % deaths to <75 year olds
- **Social/Political Engagement**
 - % CVAP that voted in 2010
 - % households not linguistically isolated

Place

- **Education**
 - High school graduation rate
 - High school grads college ready
 - % elementary teachers with 5 years experience and more than BA degree
 - High school suspension and expulsion rate
- **Economy**
 - Jobs within 5 mile radius per 1000 population
 - % jobs that are in high-paying industries within 5 mile radius
 - % job growth in last year within 5 mile radius
 - Banks per 1000 population within 5 mile radius
 - % change in number of employers within 5 mile radius, 2009-2011
- **Housing**
 - % homes with <= 1 occupant per room
 - Ratio of median income to median home value
- **Health/Environment**
 - % mothers receiving prenatal care in first trimester
 - % with access to full-service grocery stores
 - Healthcare provider locations (5 miles) per 1000 population
 - PM2.5 score
- **Social/Political Engagement**
 - % who live in same residence as a year ago
 - % U.S. citizens

Goals

- Overall analysis of socio-economic conditions in the Delta
- Identify and analyze conditions and localities in particular need of focus, including primary and secondary zone
- Identify opportunities for potential community-building support priorities

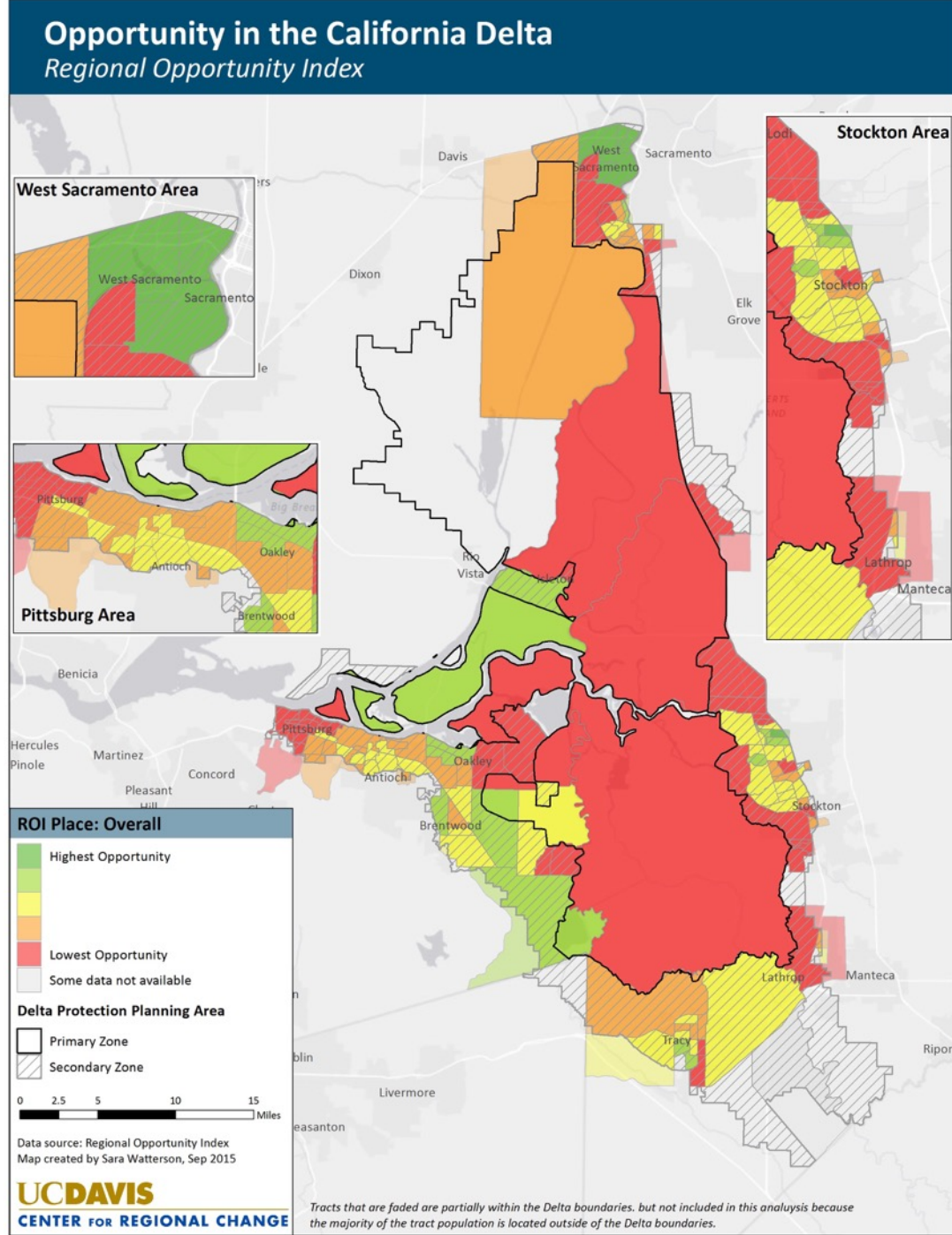
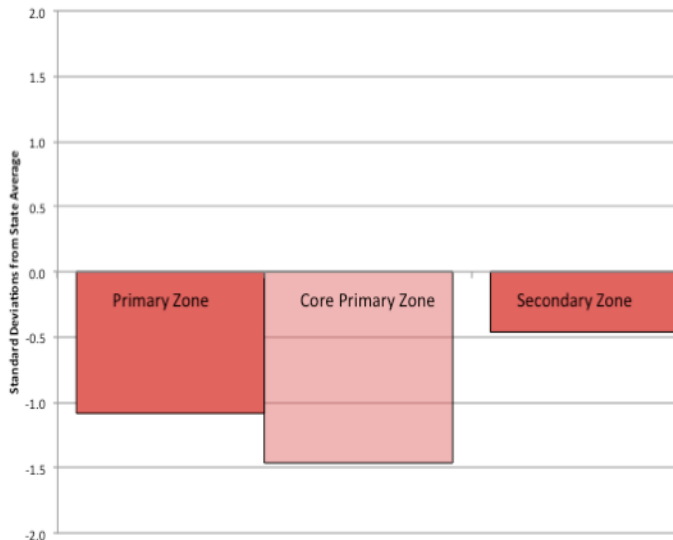


PLACE: Overall



- Overall opportunity substantially below state average
- Core Primary Delta Zone has particularly low opportunity

Regional Opportunity Index: Place

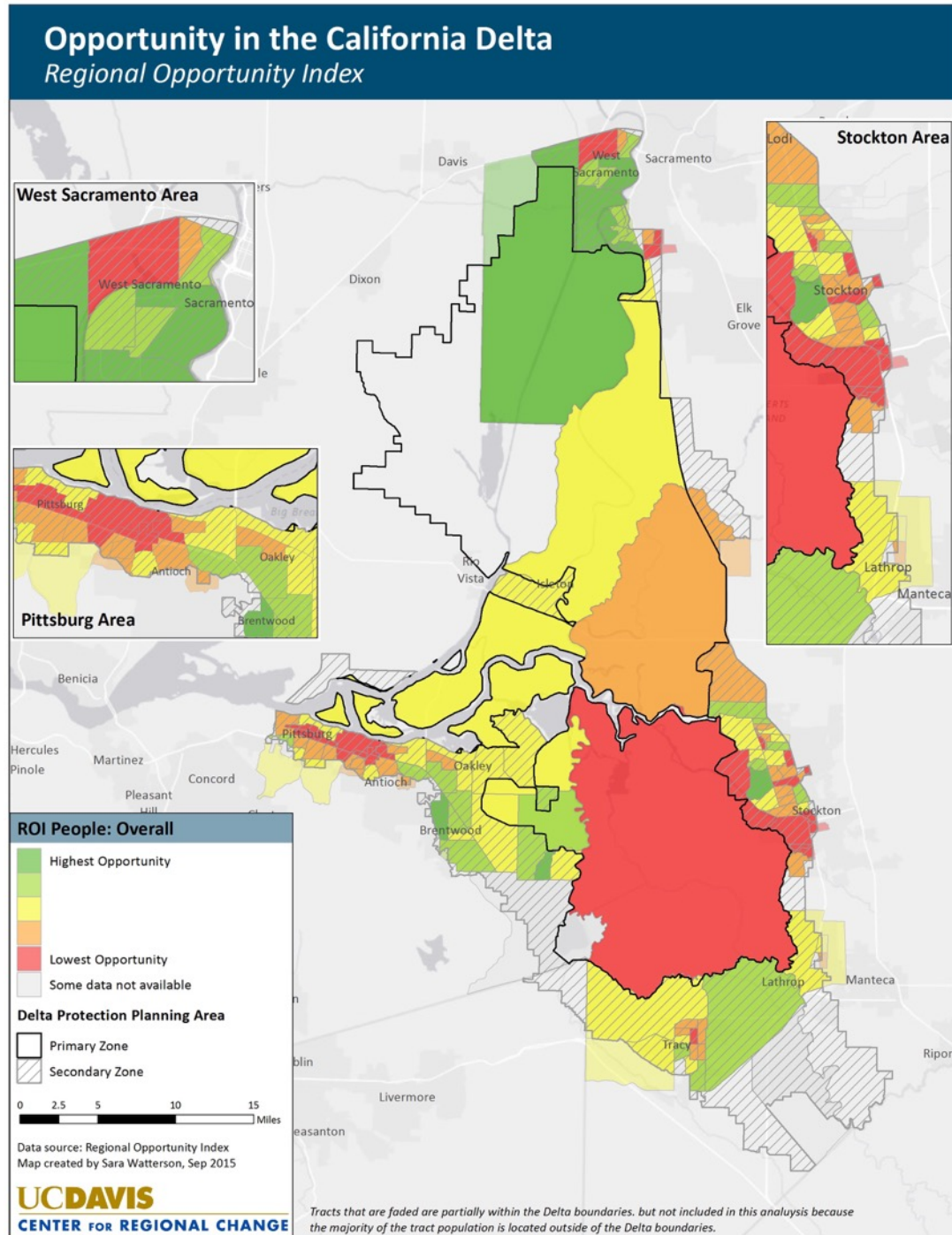
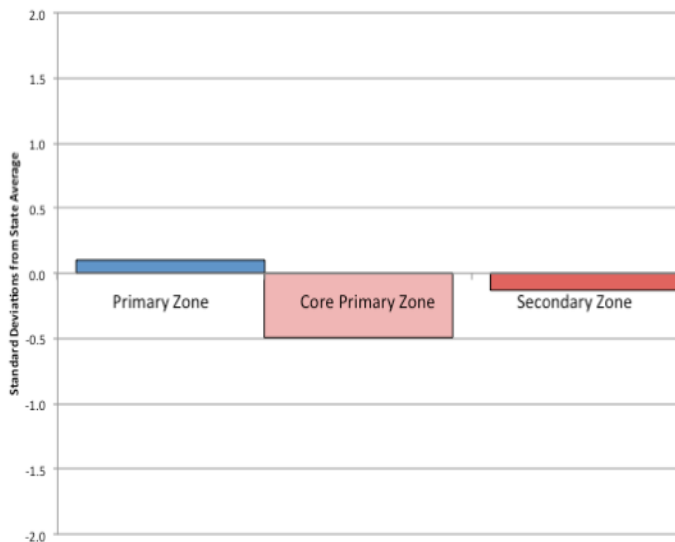


PEOPLE: Overall



- People living in core Primary Zone are doing *significantly worse than average*
- People in Secondary Zone doing *somewhat lower than average*

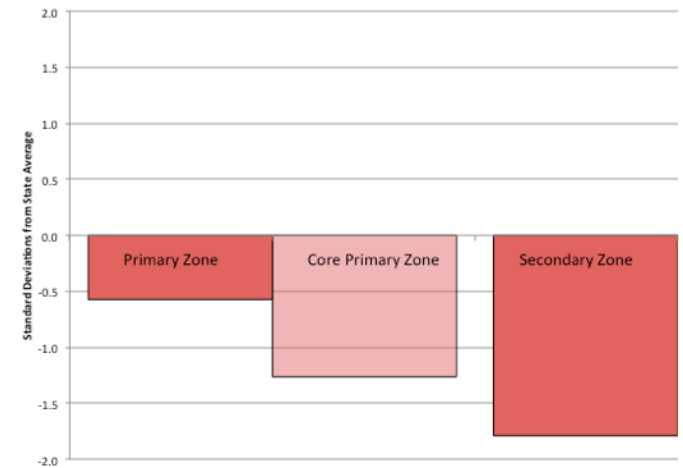
Regional Opportunity Index: People



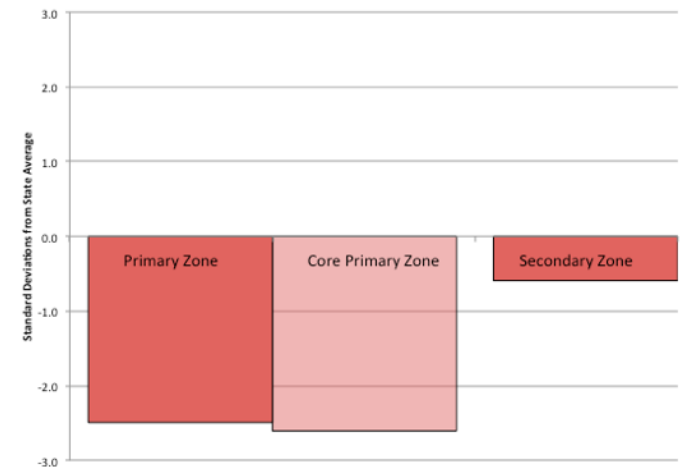
What's Driving Low PLACE Opportunity?

- **Education:**
 - HS Graduate Rates OK, but very low teacher experience and discipline
- **Economy:**
 - Most indicators low, but particularly low job quality and business growth
- **Health:**
 - Low health care availability and prenatal care
- **Housing above average and Civic life about average**

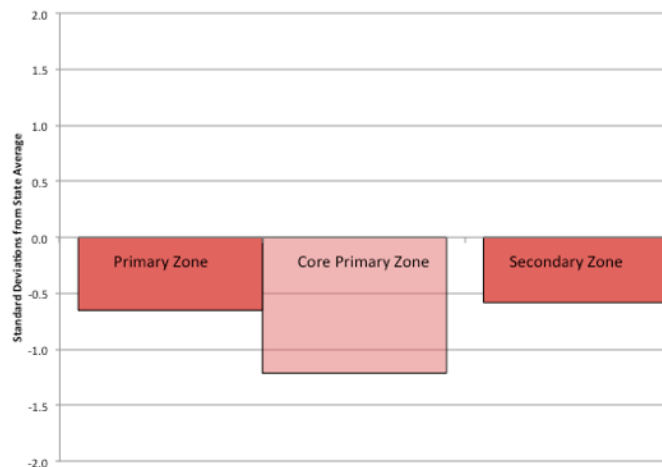
Education Opportunity: Place



Economic Opportunity: Place



Health/Environment Opportunity: Place



What's Driving Low PEOPLE Opportunity?--1

- **Education:**

- All indicators except truancy below average

- **Economy:**

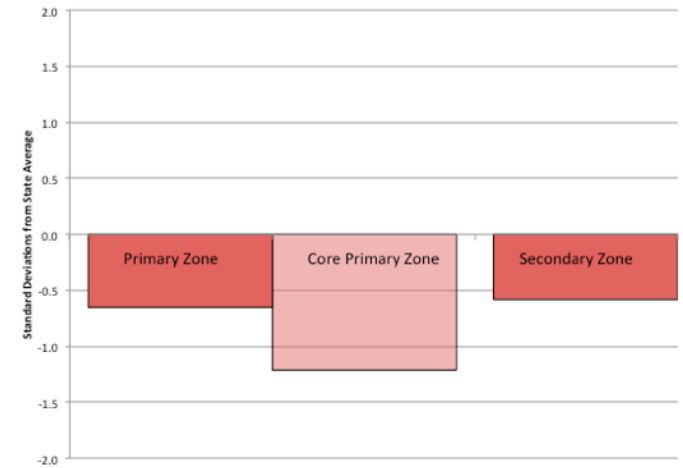
- Employment levels below average; Wages about average in Secondary Zone, but below in Primary

- **Housing:**

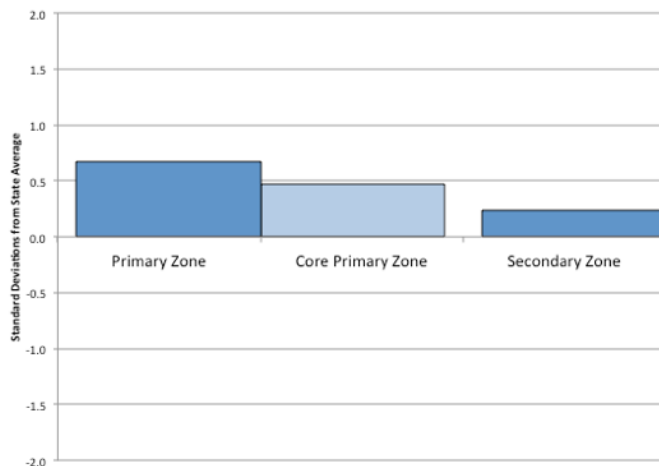
- Above average



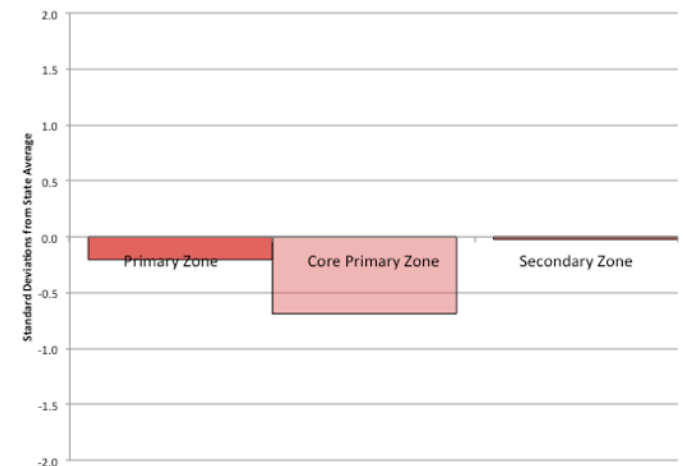
Health/Environment Opportunity: Place



Housing Opportunity: People

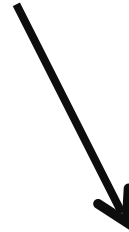


Economic Opportunity: People

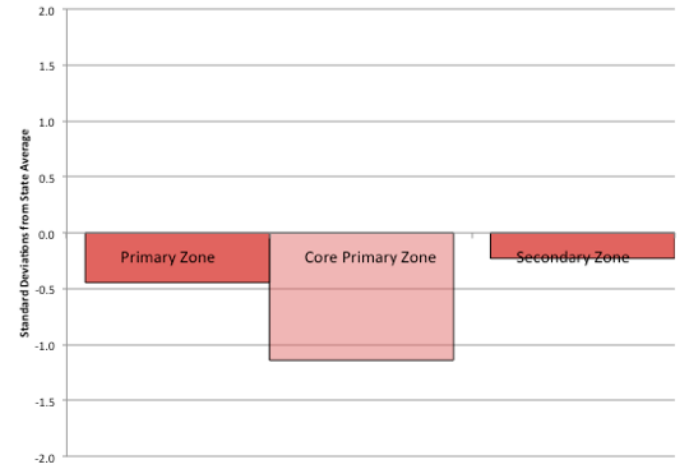


What's Driving Low PEOPLE Opportunity?--2

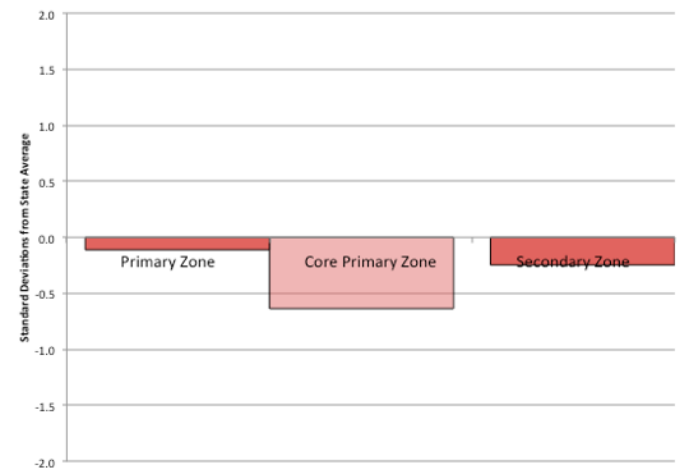
- **Mobility/Transportation:**
 - Low broadband internet access and high commute times
- **Health:**
 - High levels of low-birth weight babies and premature death
- **Civic:**
 - Above average voting rate in Primary Zone, despite low English-speaking population



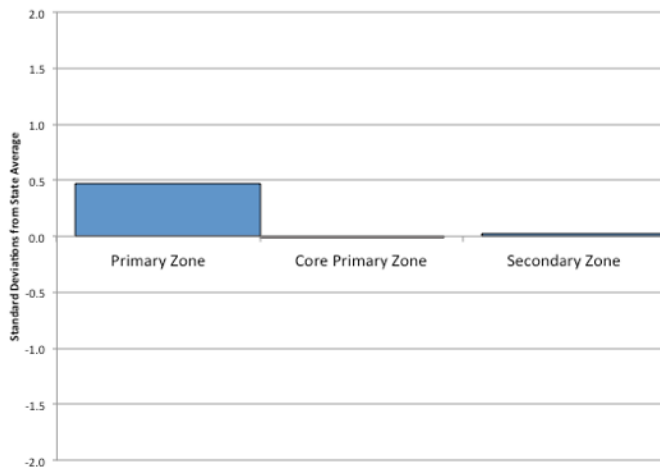
Mobility/Transportation Opportunity: People



Health/Environment Opportunity: People



Civic Life Opportunity: People



Conclusions and Recommended Priorities

- Region characterized by:
 - **Substantial education, economic and health challenges**
 - **Strong civic life and solid housing conditions**
- Development priorities:
 - **Improve school quality**
 - **Teacher skills**
 - **College readiness**
 - **Disciplinary practices (i.e. truancy)**
 - Economic Development
 - **Improve job quality in existing jobs**
 - **Diversify to higher-wage industries**
 - **Expand broadband internet access**
 - **Improving health services**

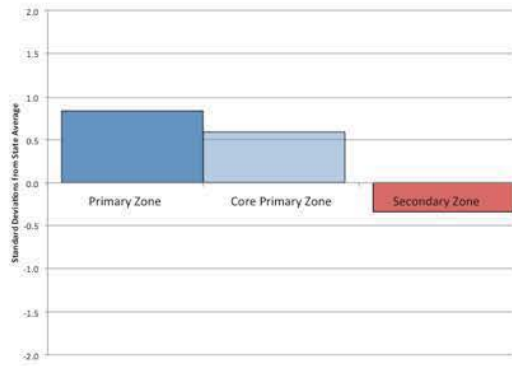


PLACE OPPORTUNITY INDICATORS

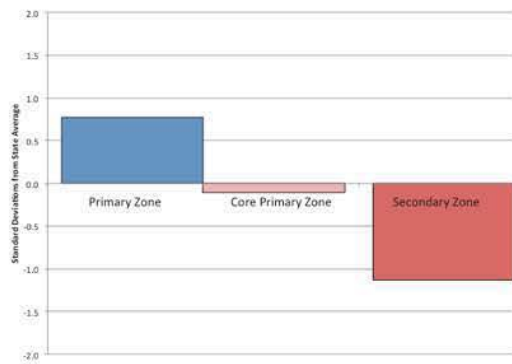
Place: Education

Opportunity in the California Delta Regional Opportunity Index

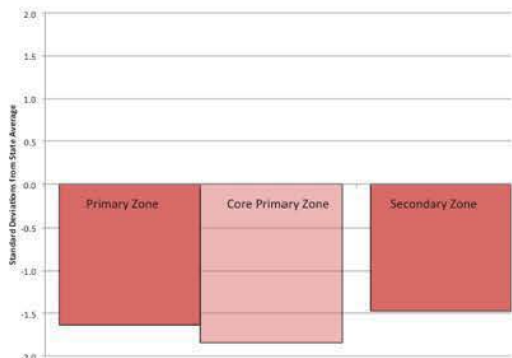
Education-Place: High School Graduation Rate



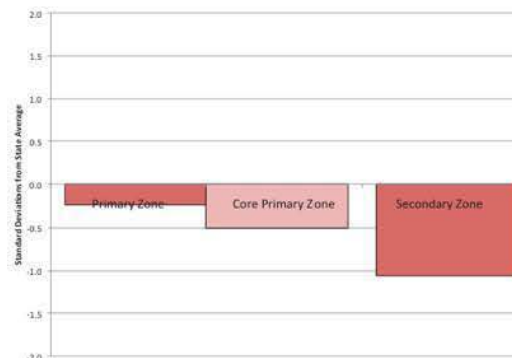
Education-Place: UC/CSU Eligibility



Education-Place: Teacher Experience



Education-Place: High School Discipline Rate



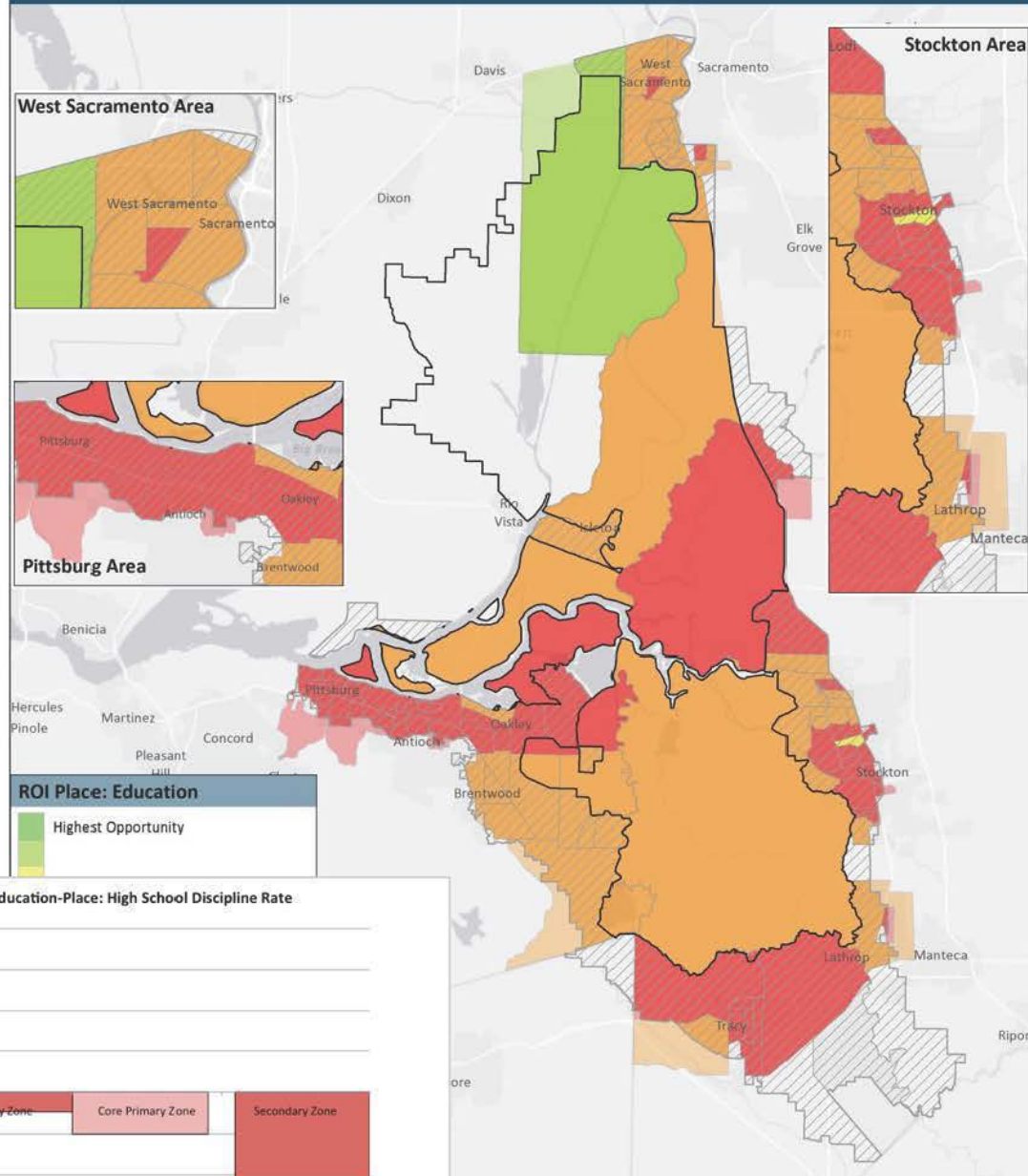
West Sacramento Area



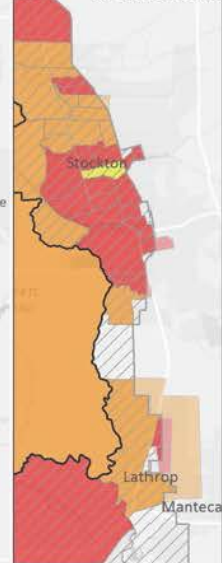
Pittsburg Area



ROI Place: Education



Stockton Area

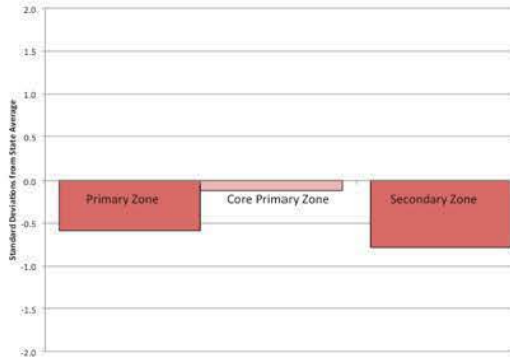


are partially within the Delta boundaries, but not included in this analysis because act population is located outside of the Delta boundaries.

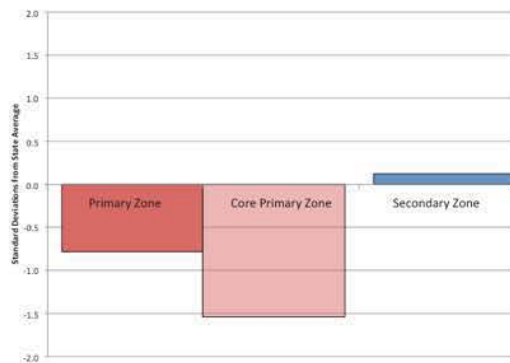
Place: Economy

Opportunity in the California Delta Regional Opportunity Index

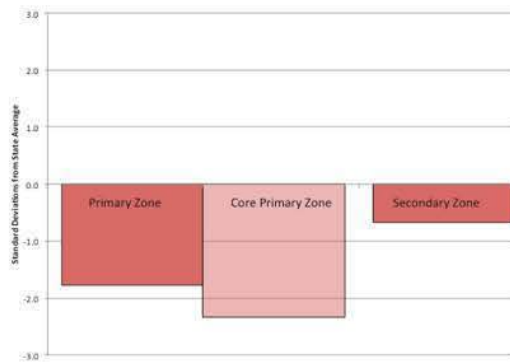
Economy-Place: Job Availability



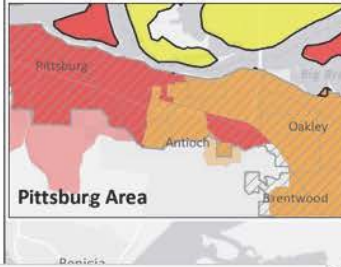
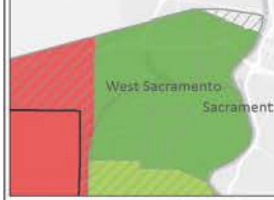
Economy-Place: Job Growth



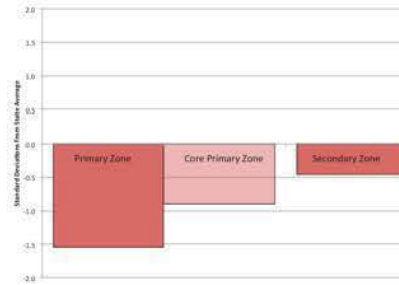
Economy-Place: Job Quality



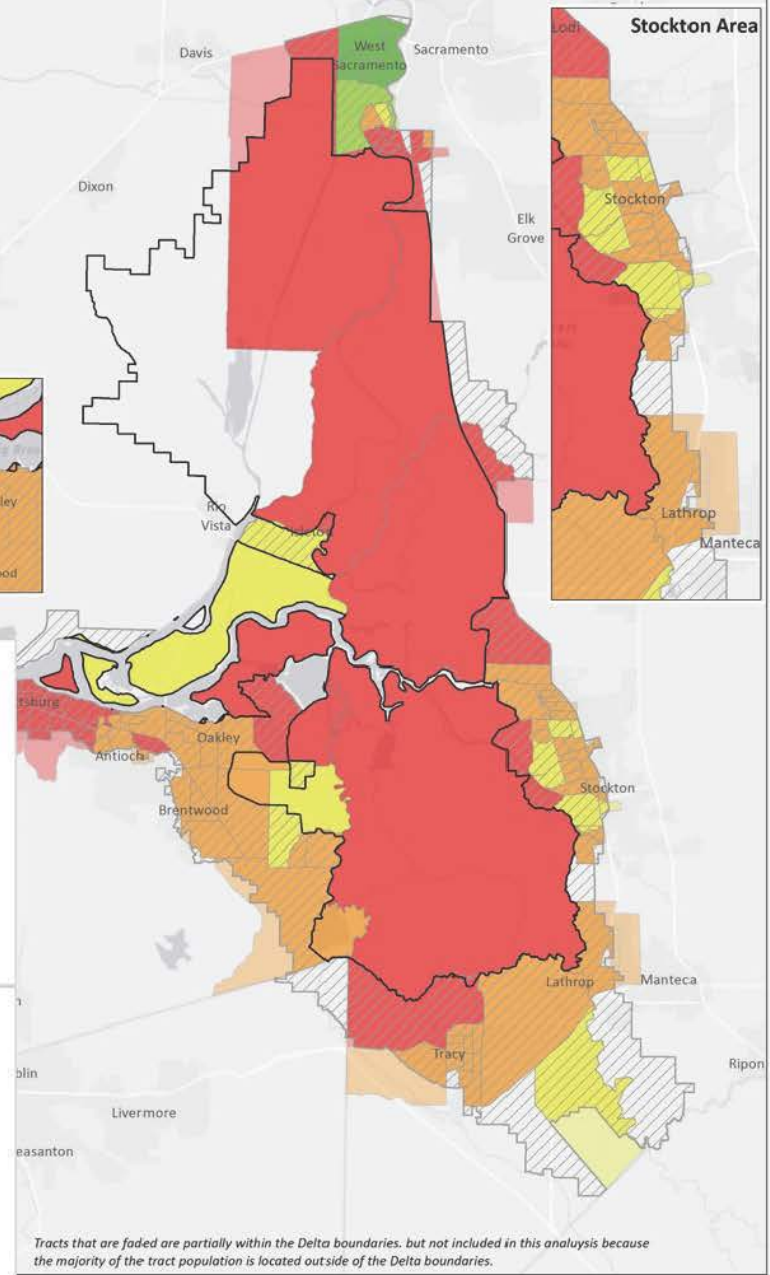
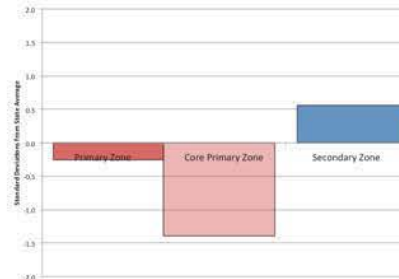
West Sacramento Area



Economy-Place: Bank Accessibility



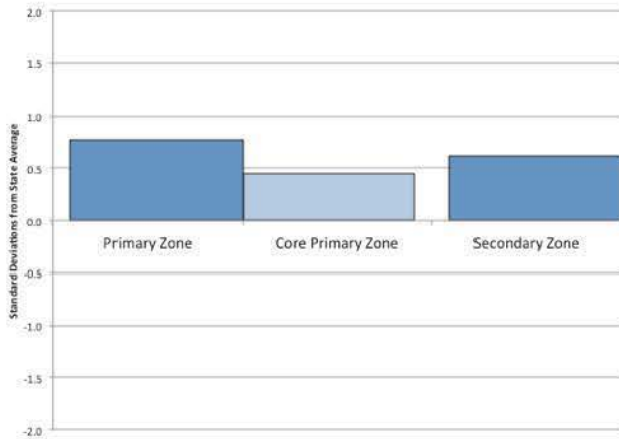
Economy-Place: Business Growth



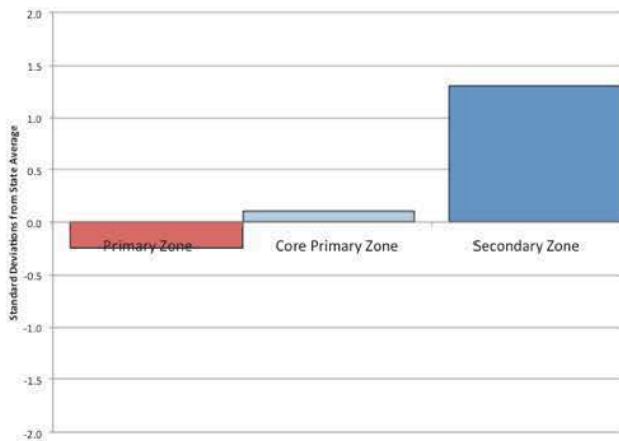
Place: Housing



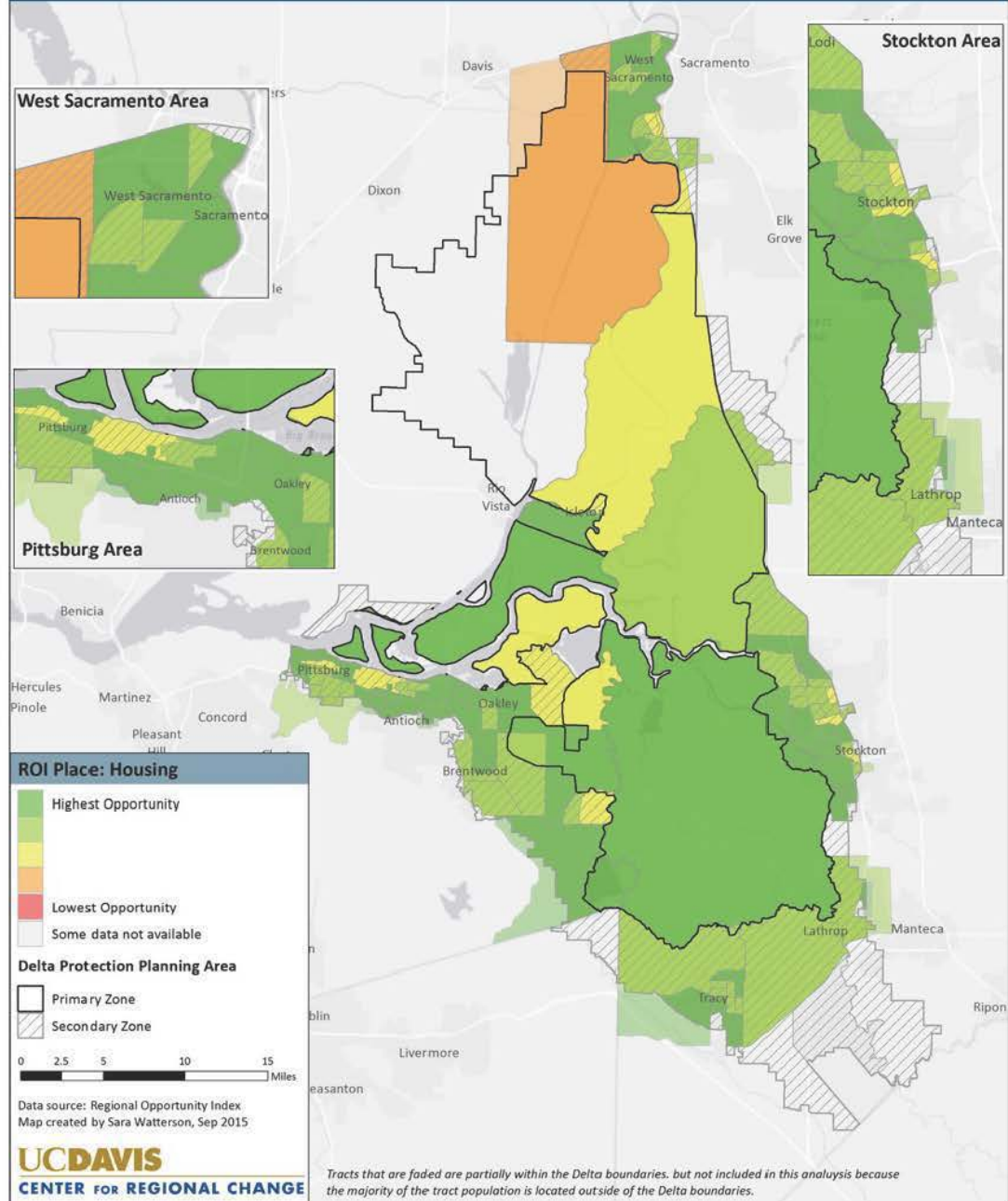
Housing-Place: Housing Adequacy



Housing-Place: Housing Affordability



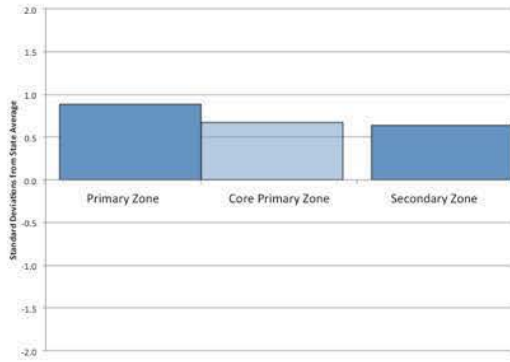
Opportunity in the California Delta Regional Opportunity Index



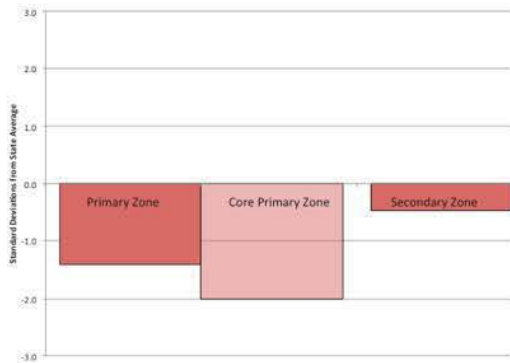
Place: Health/Env

Opportunity in the California Delta Regional Opportunity Index

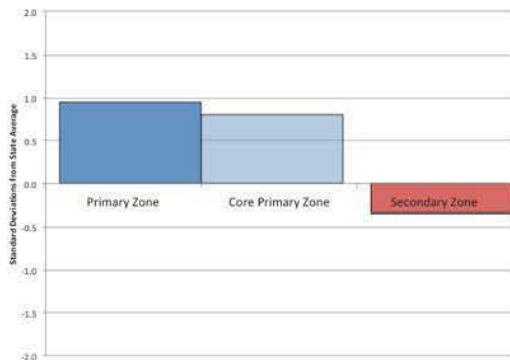
Health/Environment-Place: Air Quality



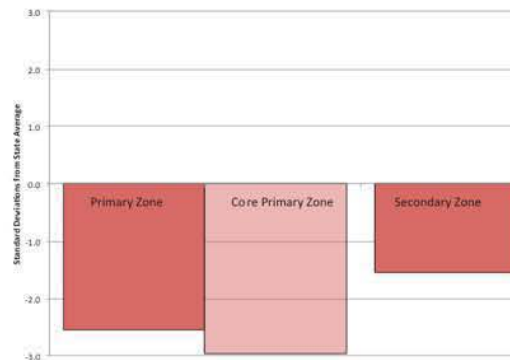
Health/Environment-Place: Prenatal Care



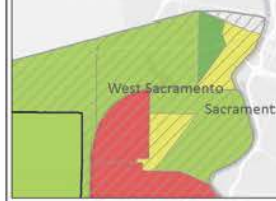
Health/Environment-Place: Access to Supermarket



Health/Environment-Place: Health Care Availability



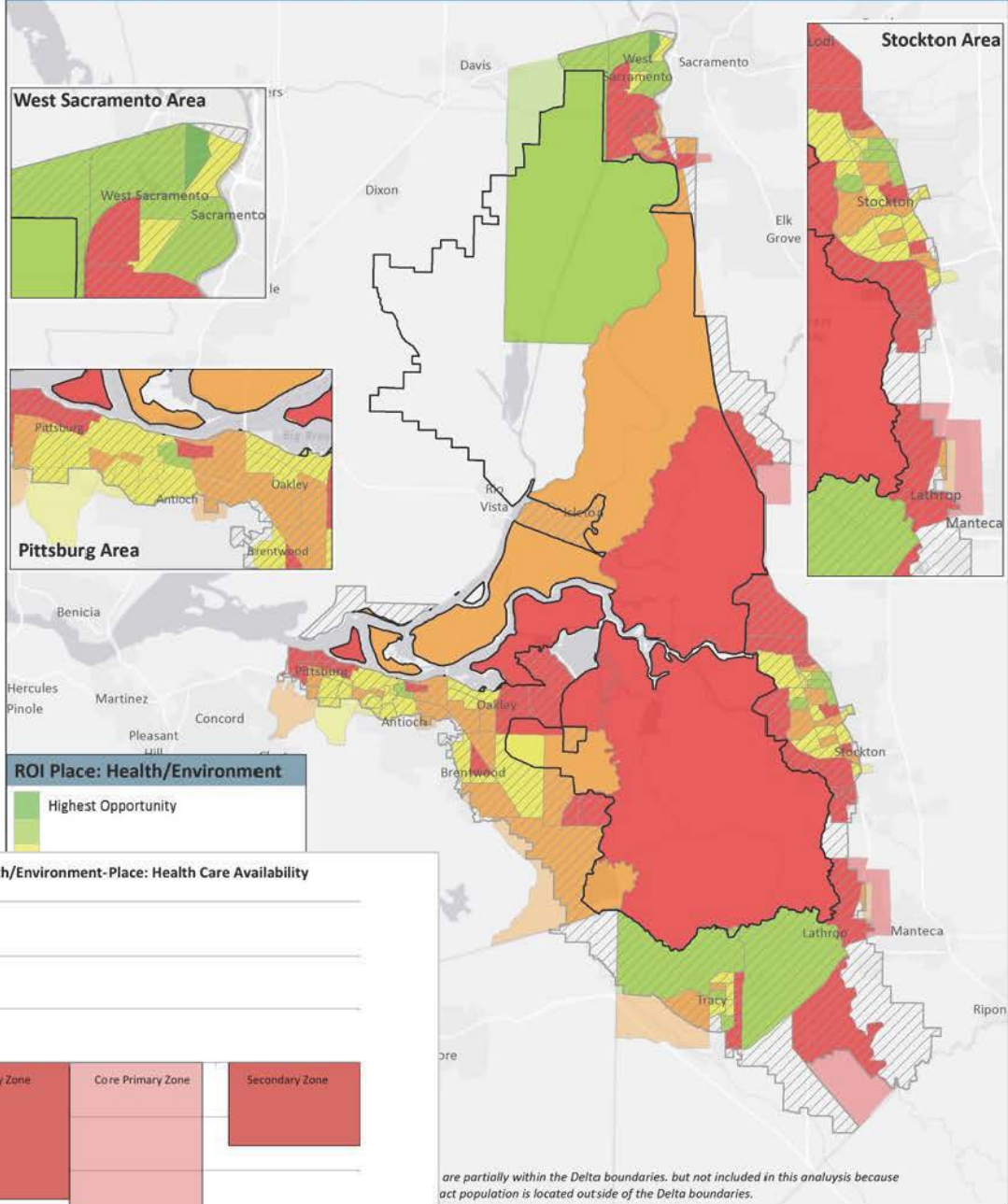
West Sacramento Area



Pittsburg Area



ROI Place: Health/Environment



are partially within the Delta boundaries, but not included in this analysis because act population is located outside of the Delta boundaries.

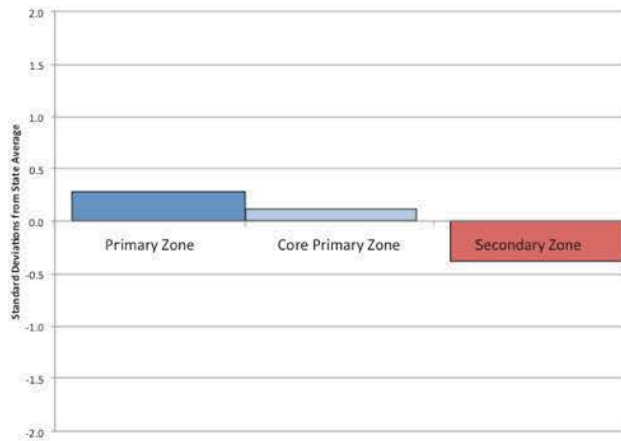
Place: Civic Life



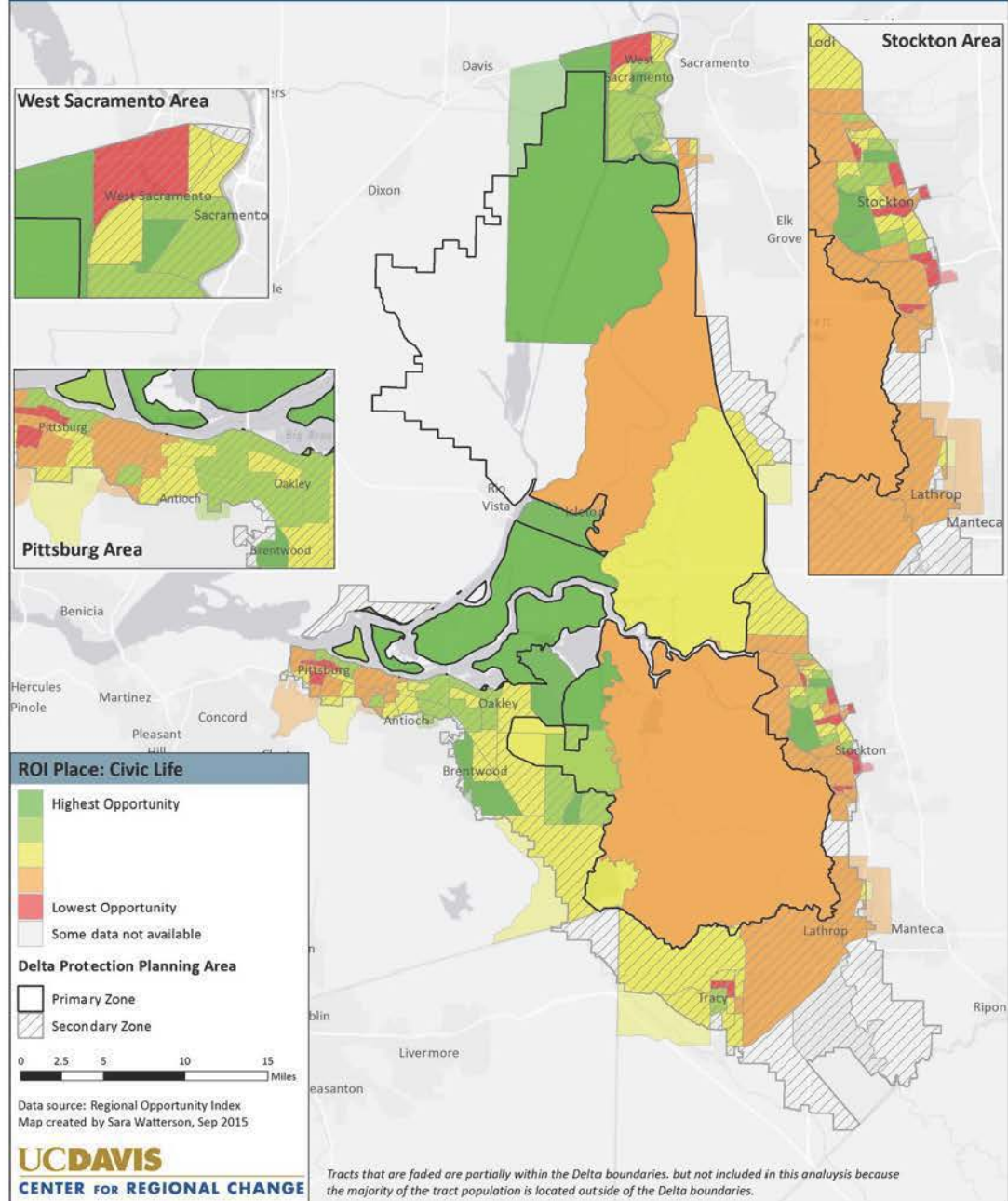
Civic Life-Place: US Citizenship



Civic Life-Place: Neighborhood Stability



Opportunity in the California Delta Regional Opportunity Index

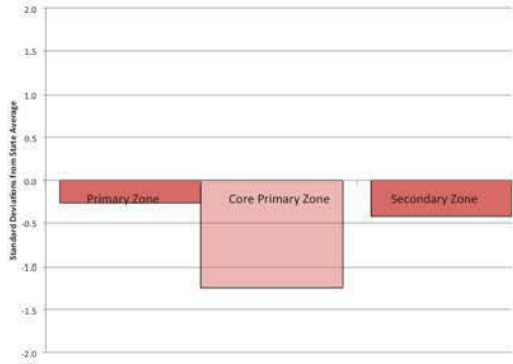




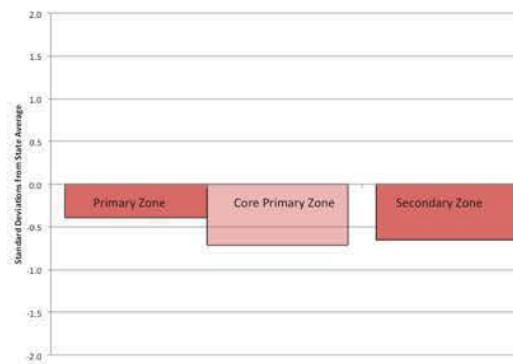
PEOPLE OPPORTUNITY INDICATORS

People: Education

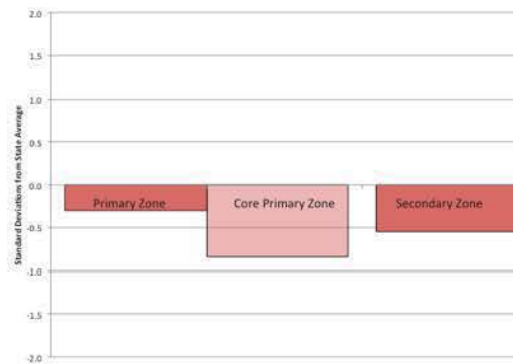
Education-People: College-Educated Adults



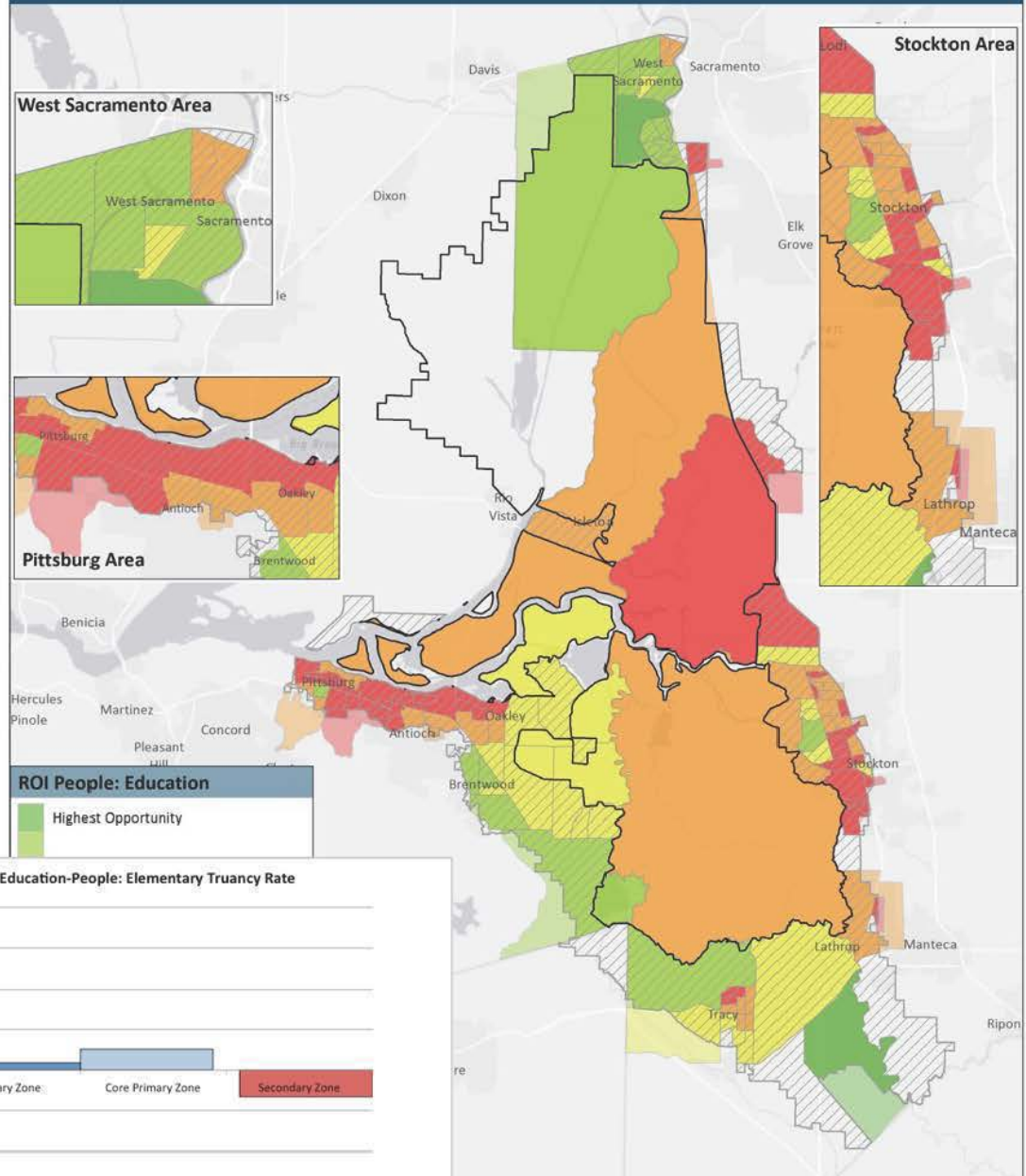
Education-People: Math Proficiency



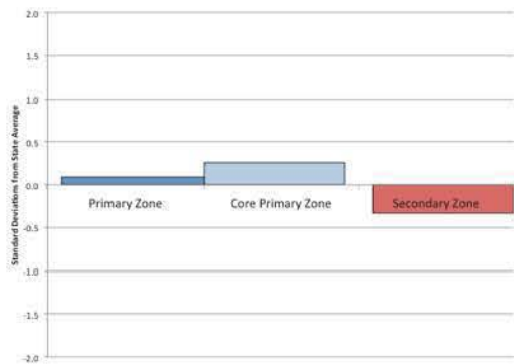
Education-People: English Proficiency



Opportunity in the California Delta Regional Opportunity Index



Education-People: Elementary Truancy Rate

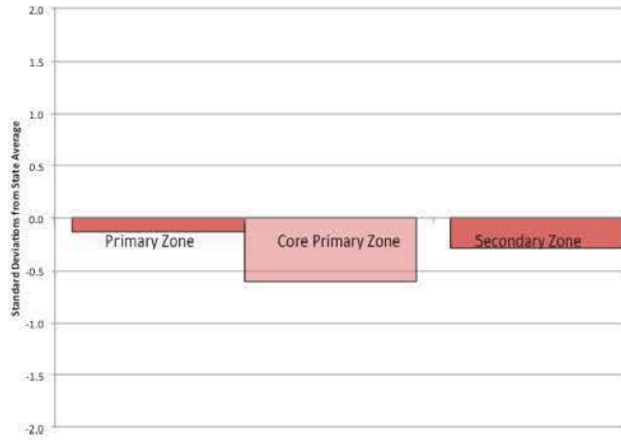


are partially within the Delta boundaries, but not included in this analysis because their population is located outside of the Delta boundaries.

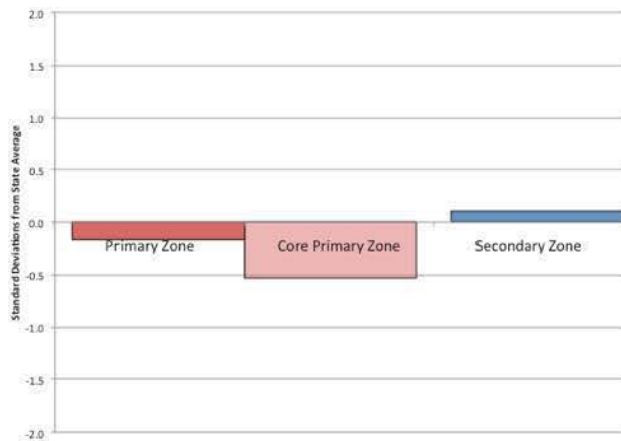
People: Economy



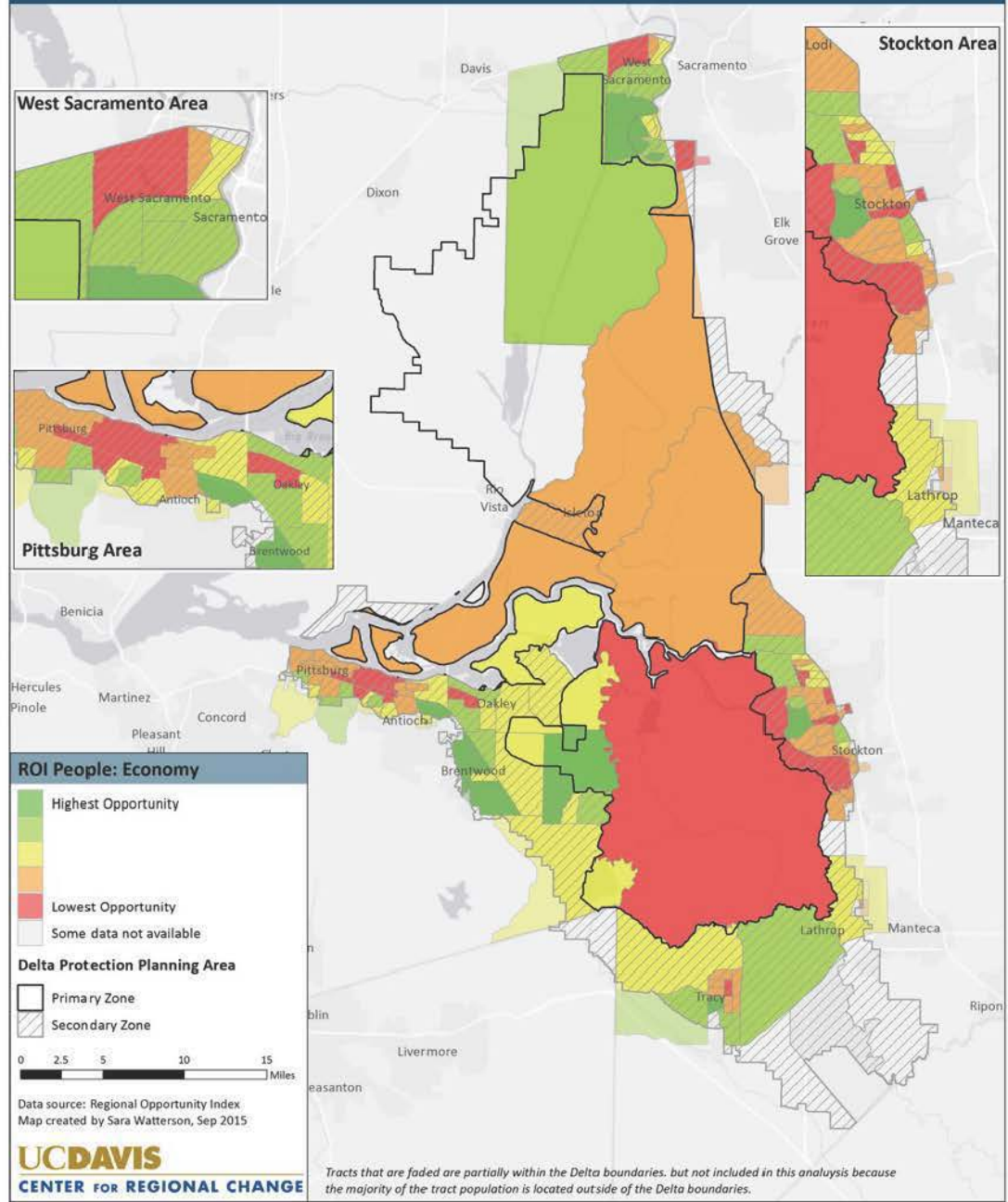
Education-People: Employment Rate



Economy-People: Minimum Basic Income



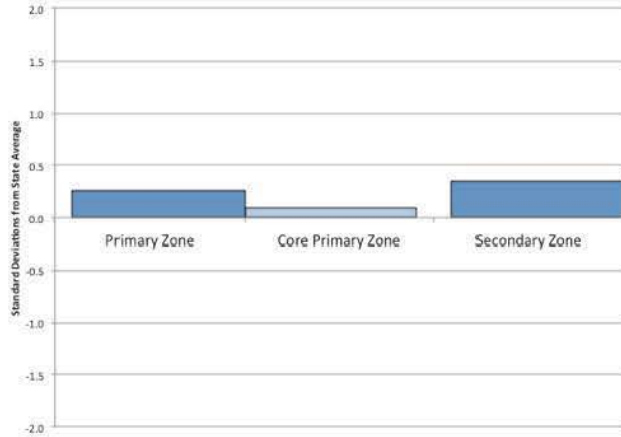
Opportunity in the California Delta Regional Opportunity Index



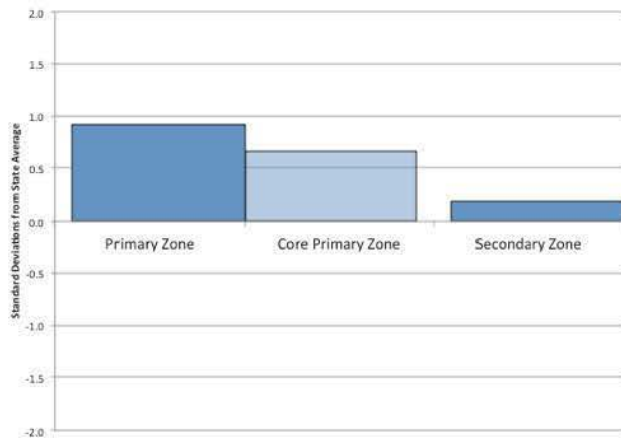
People: Housing



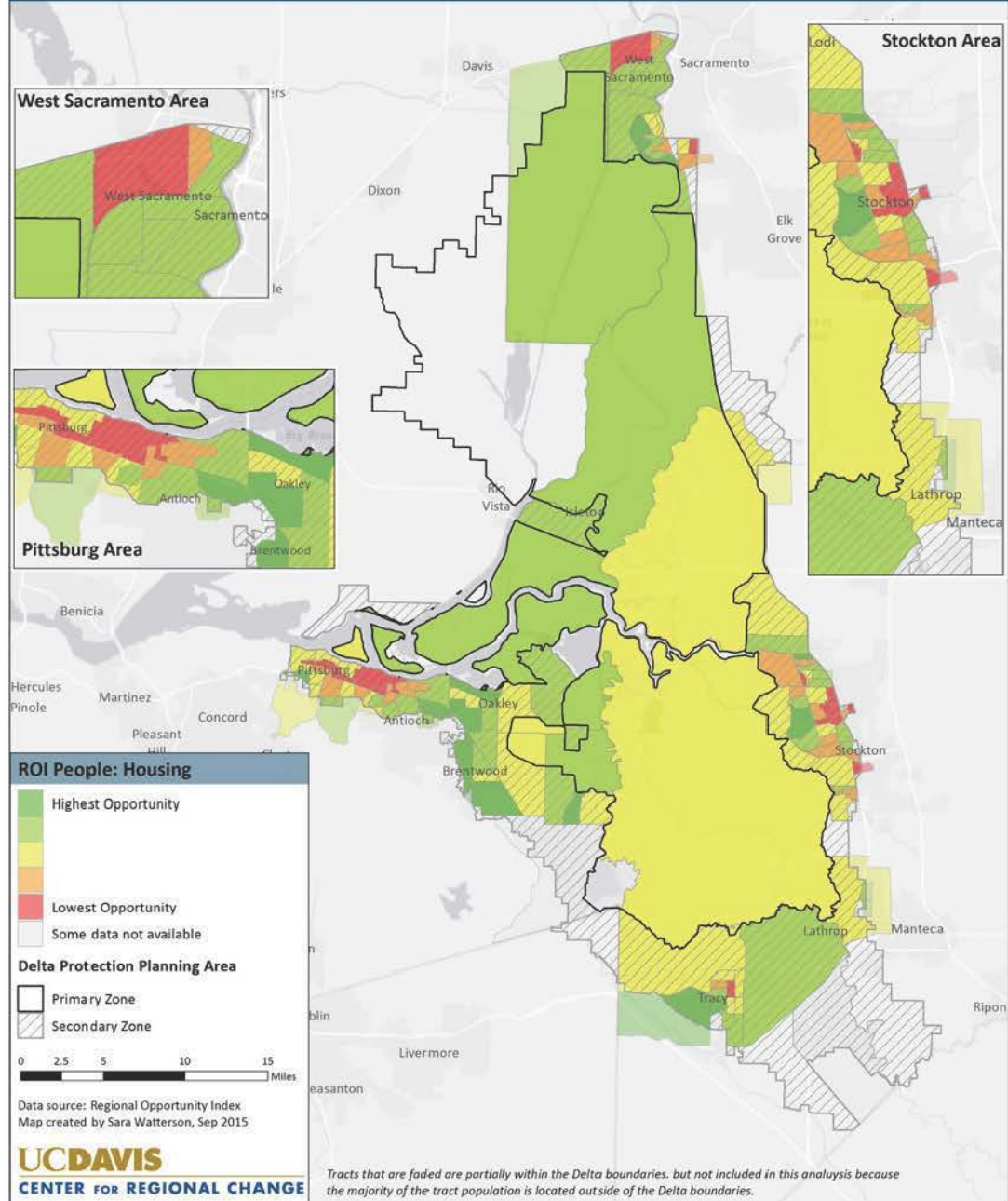
Housing-People: Home Ownership



Housing-People: Housing Cost Burden

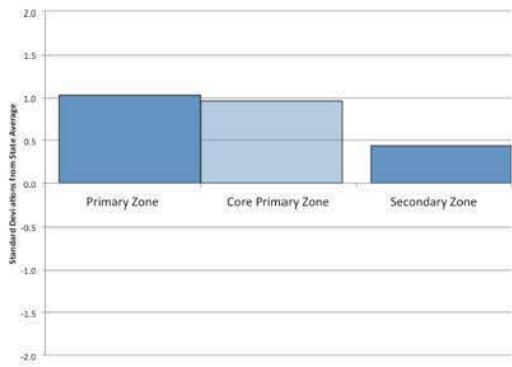


Opportunity in the California Delta Regional Opportunity Index

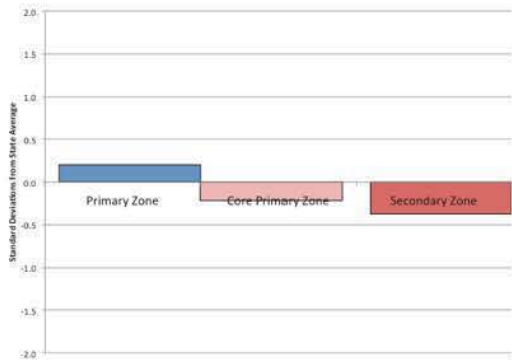


People: Mobility/Trans

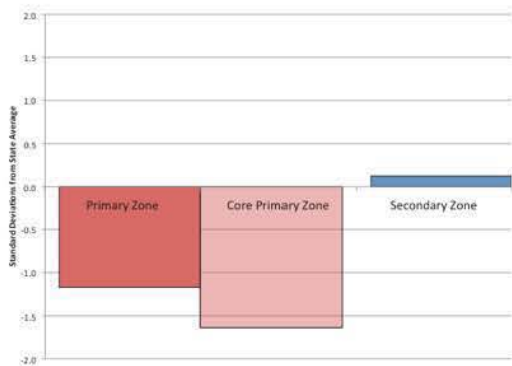
Mobility/Transportation-People: Vehicle Availability



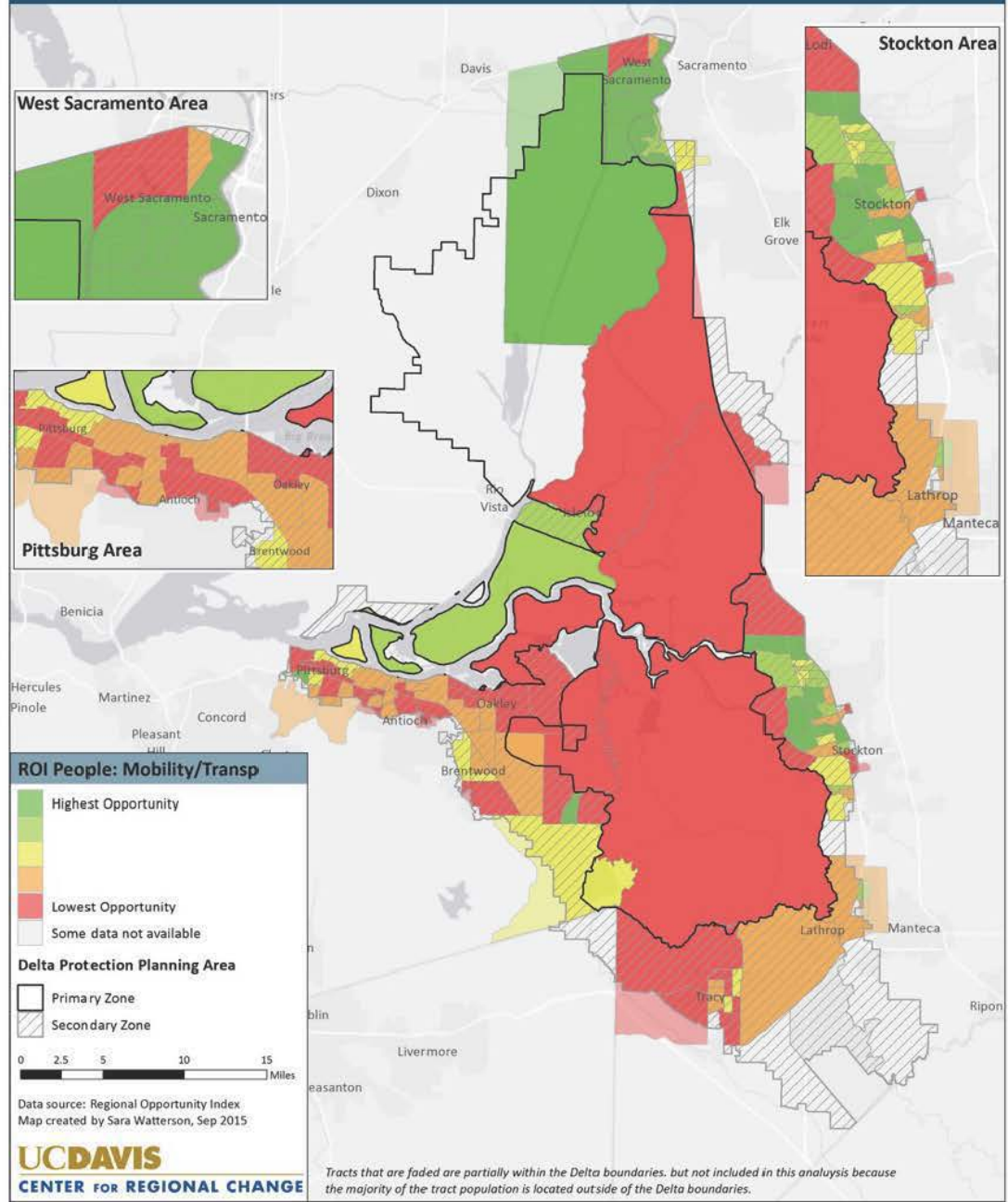
Mobility/Transportation-People: Commute Time



Mobility/Transportation-People: Internet Access

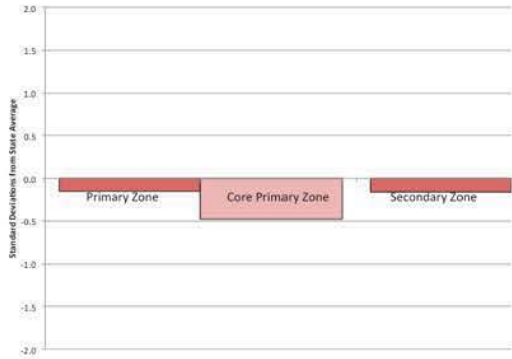


Opportunity in the California Delta Regional Opportunity Index

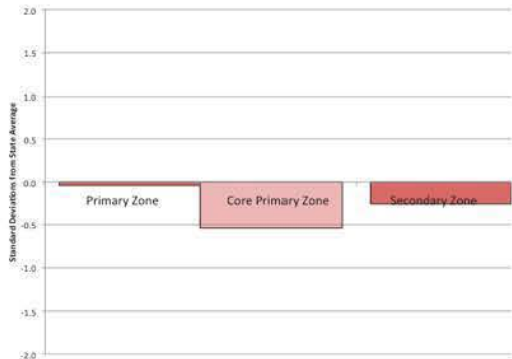


People: Health/Env

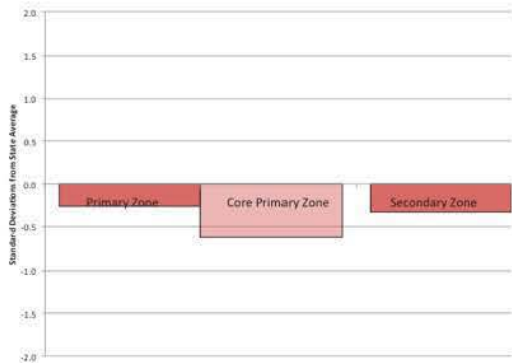
Health/Environment-People: Infant Health



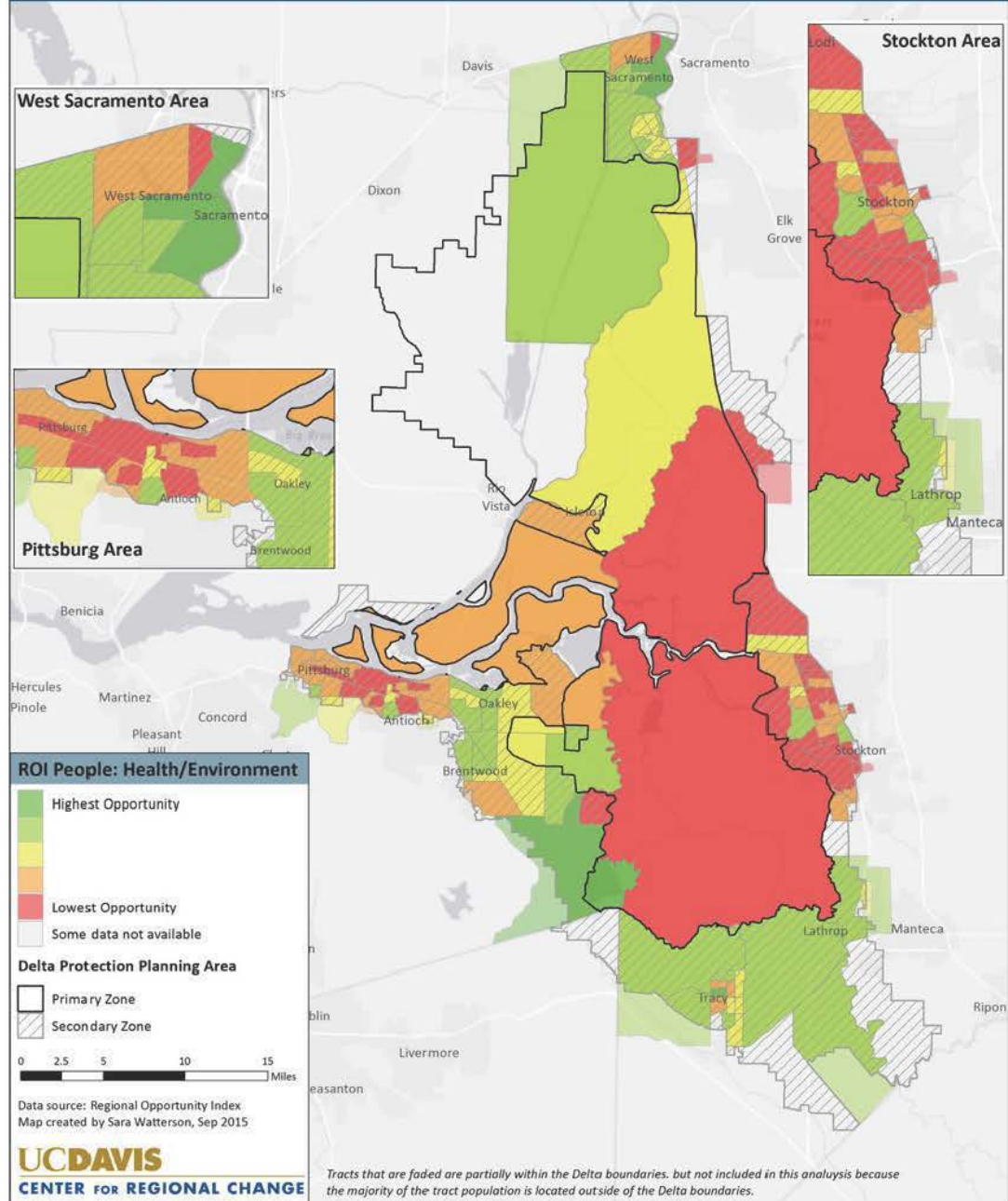
Health/Environment-People: Births to Teens



Health/Environment-People: Years of Potential Life Lost



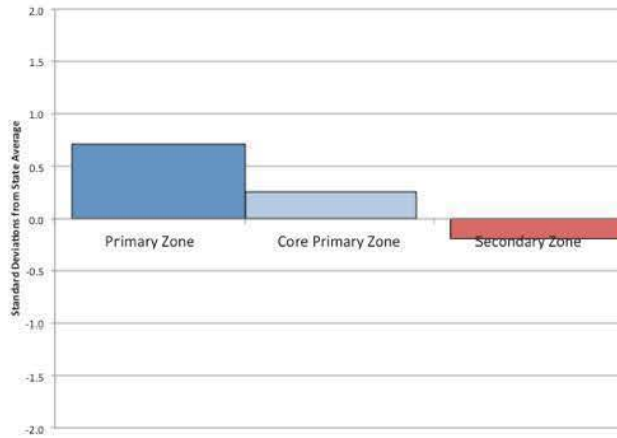
Opportunity in the California Delta Regional Opportunity Index



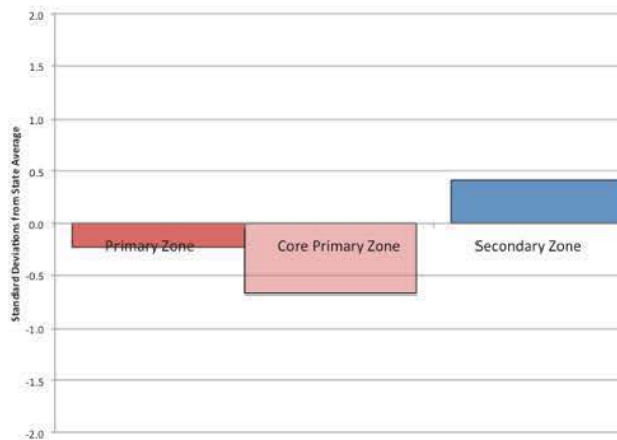
People: Civic Life



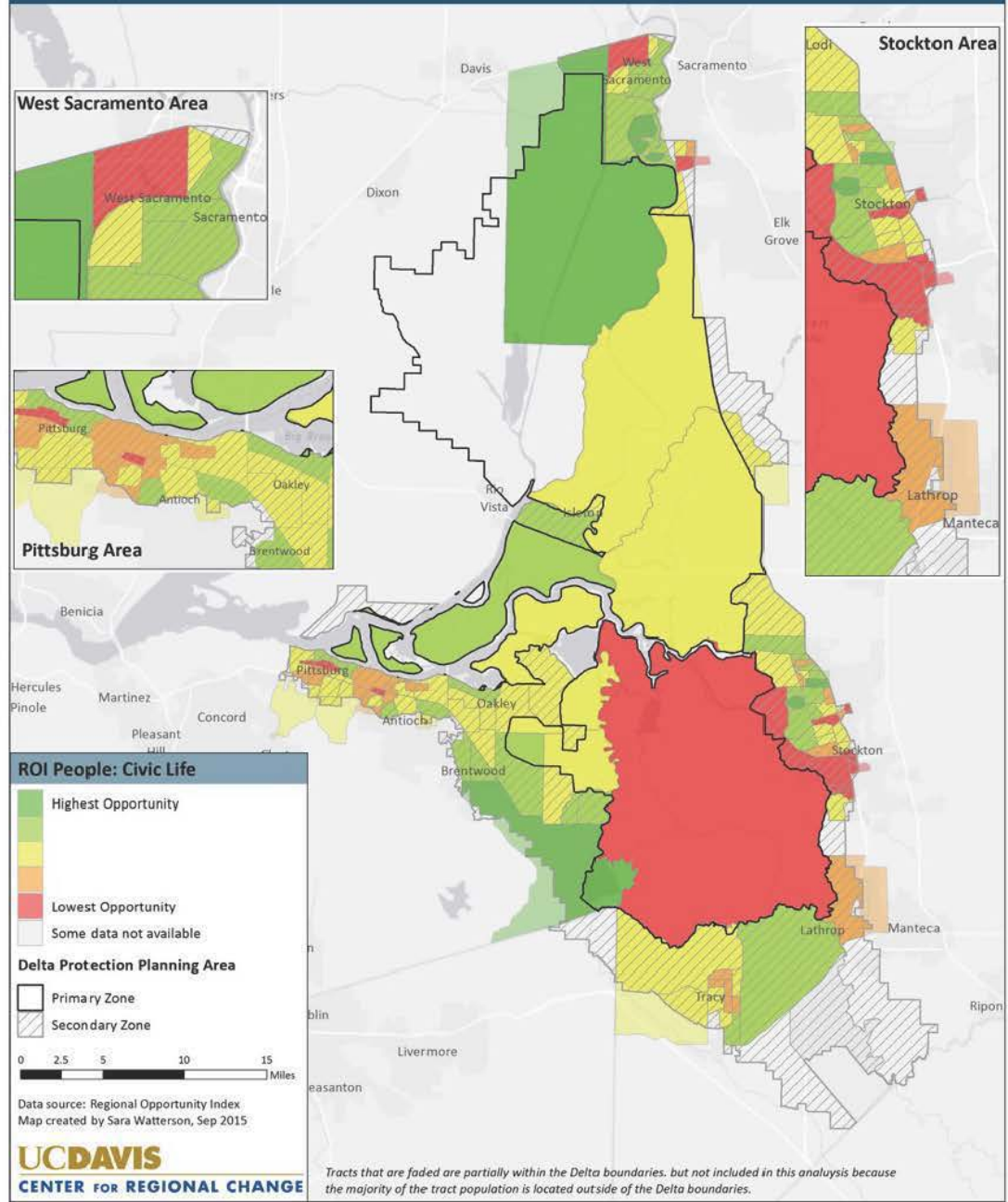
Civic Life-People: Voting Rate



Civic Life-People: English Speakers



Opportunity in the California Delta Regional Opportunity Index



DELTA ECONOMIC INDICATORS



UC Davis professors in human ecology, and CRC affiliates are working on a set of economic indicators for the Delta.

These indicators will be similar to those that have been developed for the Great Valley Center and their indicators report series:

<http://www.greatvalley.org/work/indicators>



Please send addition questions to

ccbenner@ucdavis.edu

jlondon@ucdavis.edu